

0833-001

CONGLETON SUBDIVISION

PALM BEACH COUNTY, FLORIDA

A resubdivision of the East 30 feet of the South half of the South half of lot 30 and also the South half of the South half of Lots 31 and 32, LESS the East 60 feet of Lot 32; AND

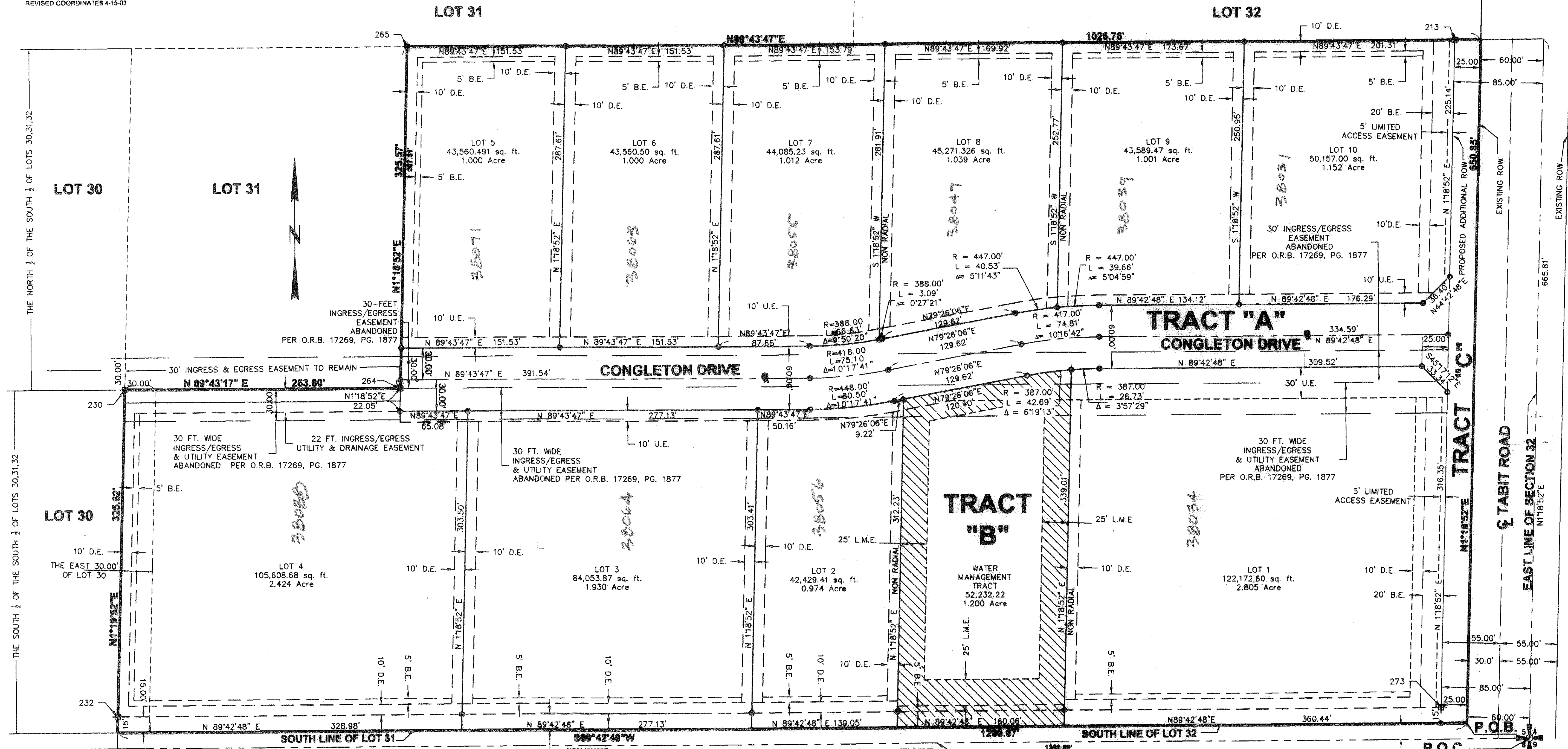
the East 1026.76 feet of the North half of the South half of Lots 31 and 32 LESS the East 60 feet of Lot 32, of the Unrecorded Plat of the Subdivision of Section 5, Township 44 South, Range 37 East by the Trustees of the Internal Improvement Fund, Tallahassee, titled "Lands Offered for Sale in the Everglades", dated December 1, 1916. Containing: 753,980.04 square feet, 17.309 Acres.

NOTES: COORDINATES, BEARINGS AND DISTANCES, COORDINATES SHOWN ARE GRID COORDINATES, ON THE 1983 NORTH AMERICAN DATUM (NAD83) 1998 ADJUSTMENT, ZONE: FLORIDA EAST, LINEAR UNIT U.S. SURVEY FOOT COORDINATE SYSTEM 1983 STATE PLANE TRANSVERSE MERCATOR PROJECTION. ALL DISTANCES ARE GROUND DISTANCES SCALE FACTOR 0.999954435 GROUND DISTANCE X SCALE FACTOR = GRID DISTANCE

| POINT No. | NORTHING | EASTING | SCALE FACTOR | 15' offset North |
|-----------|------------|------------|--------------|------------------|
| 273 | 847216.122 | 789917.609 | 0.999954435 | |
| 232 | 847209.790 | 787482.031 | 0.999954435 | 15' offset North |
| 230 | 847520.308 | 787489.248 | 0.999954435 | |
| 264 | 847521.590 | 787923.033 | 0.999954435 | |
| 265 | 847847.080 | 787830.501 | 0.999954435 | |
| 213 | 847851.785 | 789932.194 | 0.999954435 | |

REVISED COORDINATES 4-15-03

TRUSTEES OF THE INTERNAL IMPROVEMENT FUND UNRECORDED PLAT "LANDS OFFERED FOR SALE IN THE EVERGLADES"



- ABBREVIATIONS**
- B.E. BUFFER EASEMENT
 - D.E. DRAINAGE EASEMENT
 - U.E. UTILITY EASEMENT
 - L.M.E. LAKE MAINTENANCE EASEMENT
 - SQ. FT. SQUARE FEET
 - O.R.B. OFFICIAL RECORD BOOK
 - ROW. RIGHT-OF-WAY
 - IN/EGR. INGRESS/EGRESS
 - EX. EXISTING
 - R. RADIUS
 - L. ARC LENGTH
 - Δ. CENTRAL ANGLE
- LEGEND:**
- ⊕ PERMANENT REFERENCE MONUMENT (P.R.M.)
 - PERMANENT CONTROL POINT (P.C.P.)
 - LOT CORNER
 - P.O.B. INDICATES POINT OF BEGINNING
 - P.O.C. INDICATES POINT OF COMMENCEMENT

EXISTING 15 FT. WIDE EASEMENT SOUTH FLORIDA CONSERVANCY DISTRICT (SFC) CANAL No.2 SOUTH FLORIDA CONSERVANCY DISTRICT CLAIMS PREScriptive RIGHTS OVER A 15-FOOT WIDE STRIP OF LAND ABUTTING THE NORTH TOP OF BANK OF CANAL NO. 2, PUMPING UNIT NO. 1 IN SECTION 5, TOWNSHIP 44 SOUTH, RANGE 37 EAST

